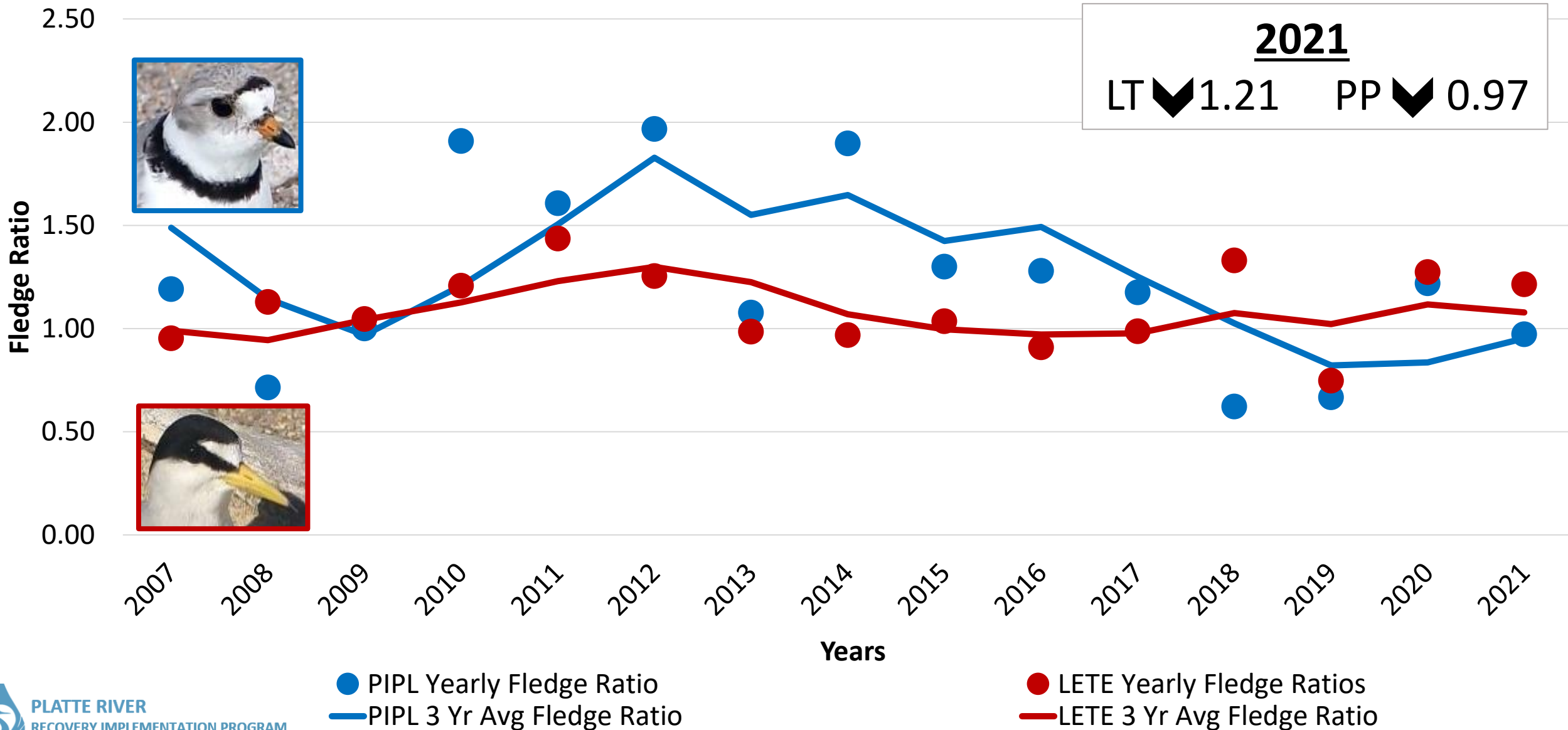


# 2021 LTPP Update

Kari Mohlman  
LTPP Project Lead

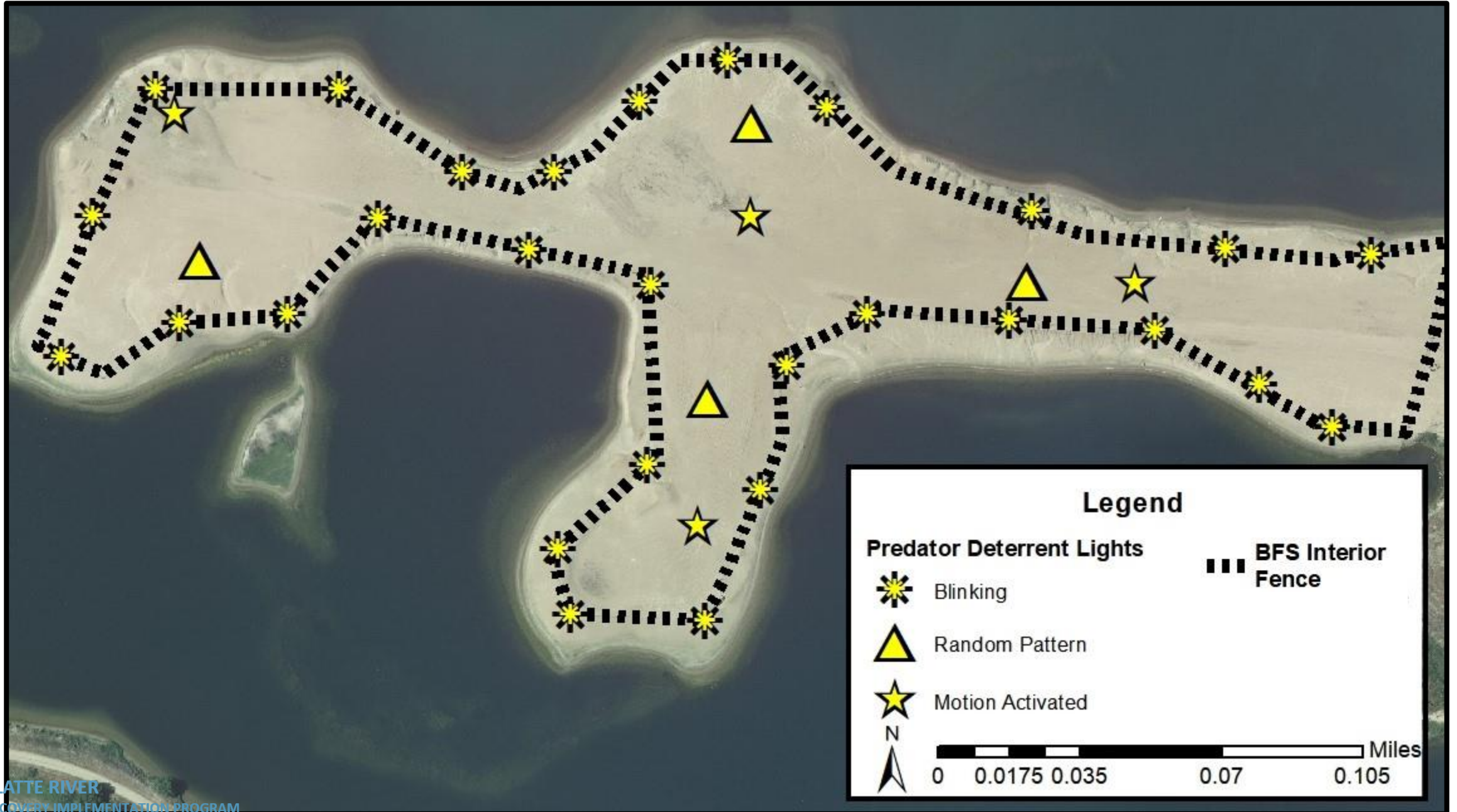


# Tern and Plover Fledge Ratios

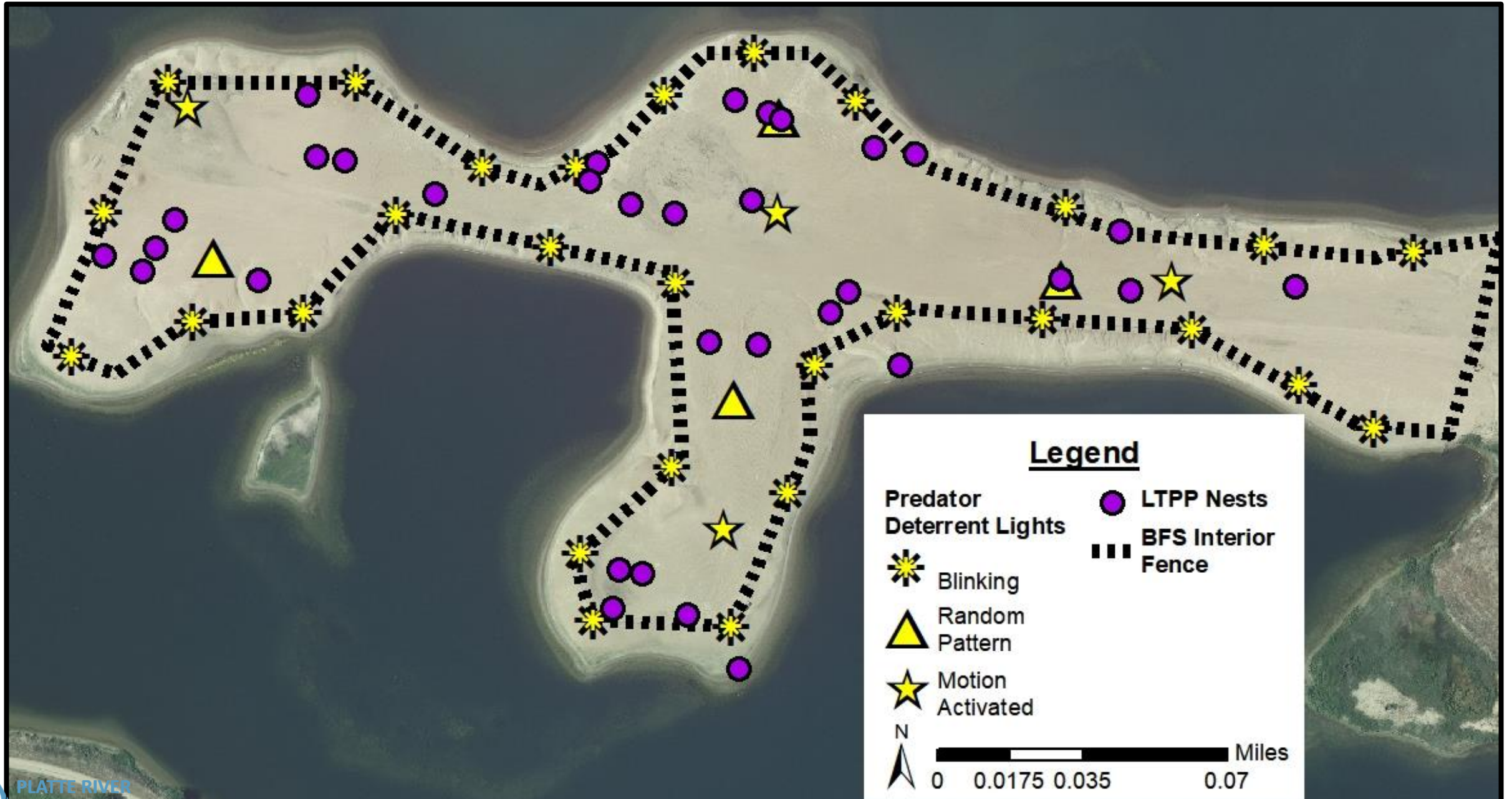




# Broadfoot-South Kearney



# Broadfoot-South Kearney





# LTPP Failed Nests and Broods Combined

Status	2019	2020	2021
Predated	23	18	28
Weather/ Flooding	18	0	8
Failed Unknown	87	58	44
Abandoned	1	3	0
<b>Total</b>	<b>129</b>	<b>79</b>	<b>80</b>



Examples of failed predation and failed unknown incidents.





# Conclusions







# 2021 Least Tern & Piping Plover Predator Update

Kaley Keldsen  
Predator Research Lead






# Predator Camera Monitoring

## Objectives

- ID predators present at the shoreline, site and nest level
- Investigate and capture nest predation events





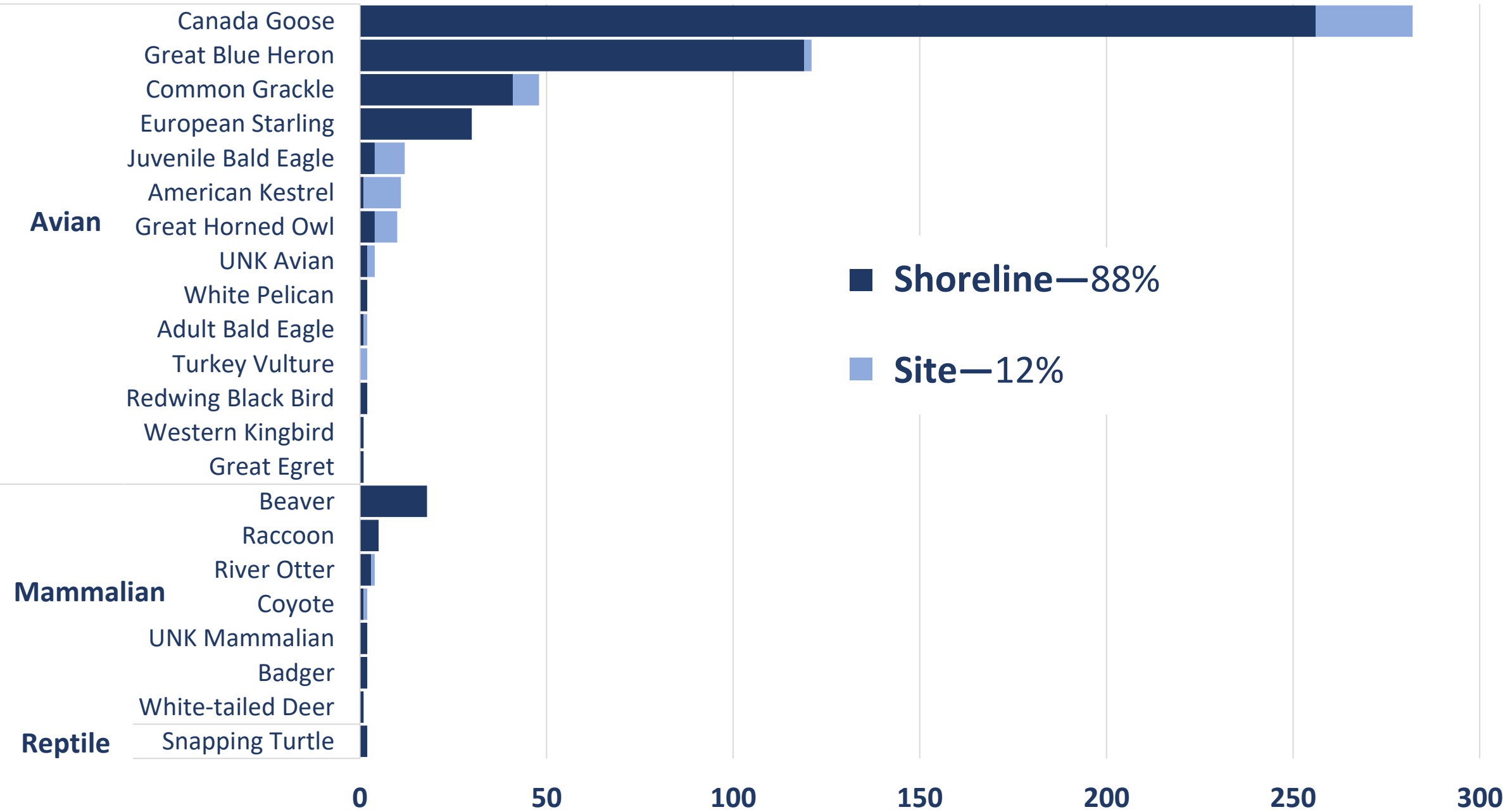
-  Shore Level Cameras
-  Site Level Cameras
-  Nest Level Cameras

 Track Surveys



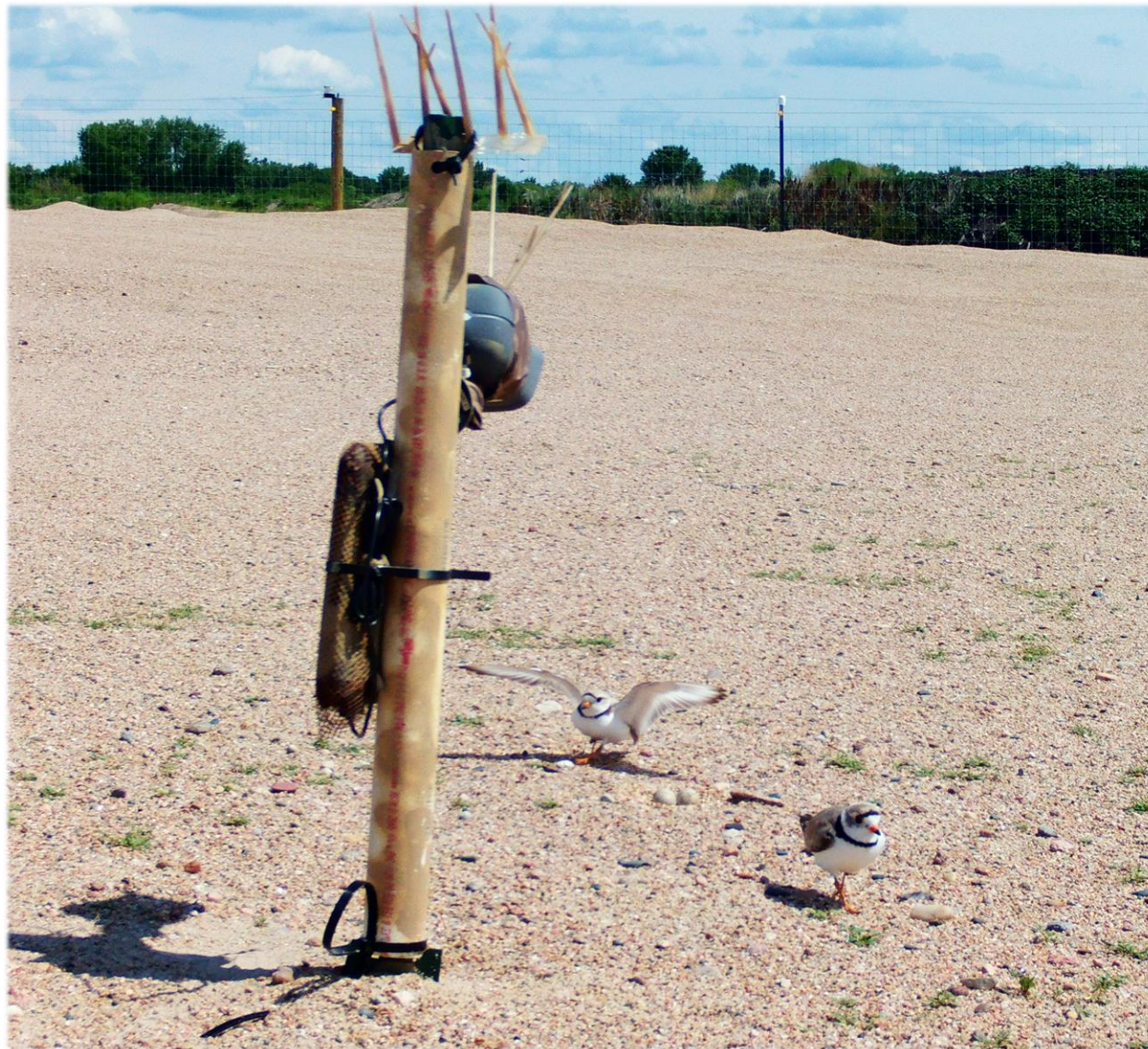


# 2021 Potential Predator Registers





# 2021 Nest Predator Research





# 2021 Nest Fates With and Without Cameras

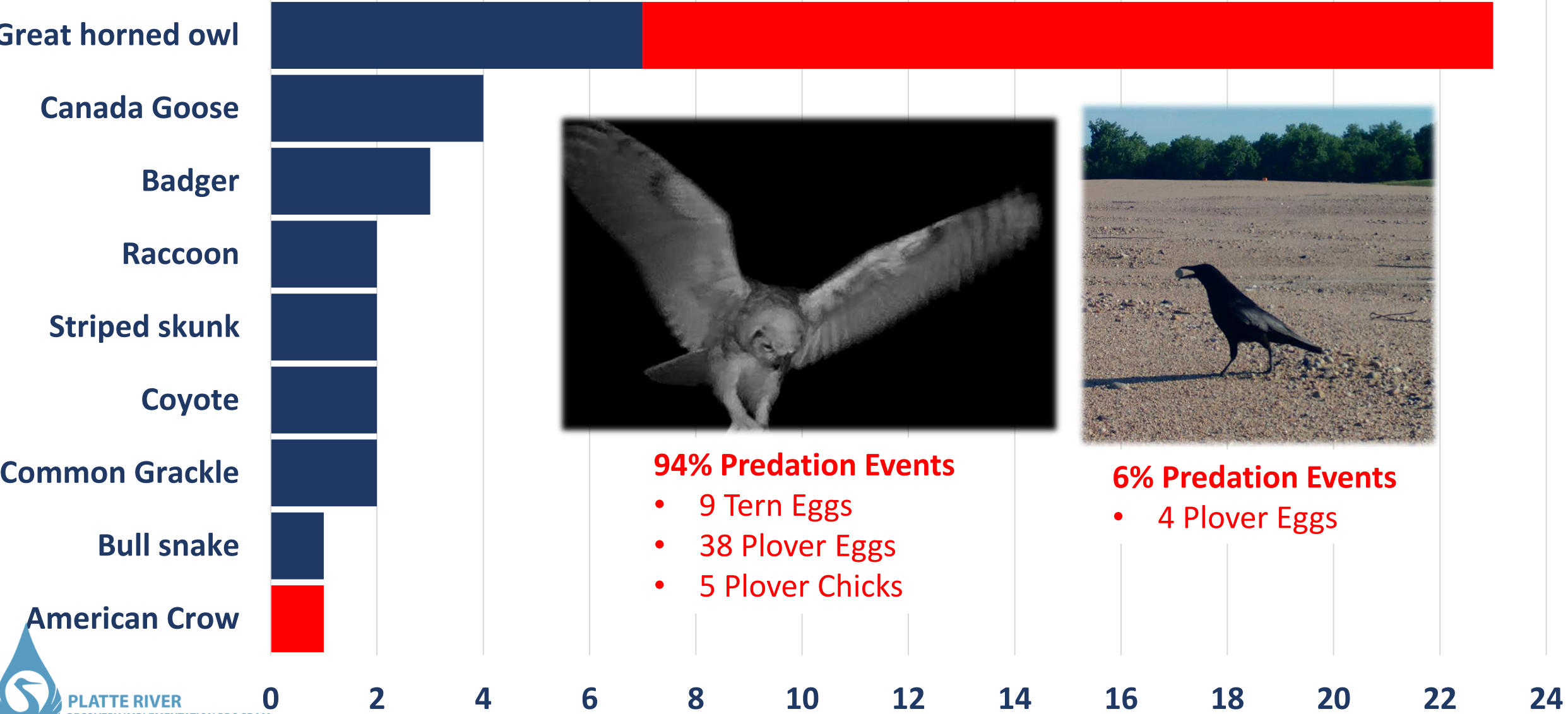
**Total Outside LTPP Nests Monitored  
= 103**

	# Nests	Successful	Failed
<b>Nests Without Camera Monitoring</b>	<b>47</b> (46%)	<b>31</b> (66%)	<b>16</b> (34%)
<b>Nests With Camera Monitoring</b>	<b>56</b> (54%)	<b>36</b> (64%)	<b>20</b> (36%)
<b>TOTAL</b>	<b>103</b> (100%)	<b>67</b> (65%)	<b>36</b> (35%)



# 2021 Nest Predator Camera Monitoring Results

■ Potential Predator Register ■ Predation Event



**94% Predation Events**

- 9 Tern Eggs
- 38 Plover Eggs
- 5 Plover Chicks

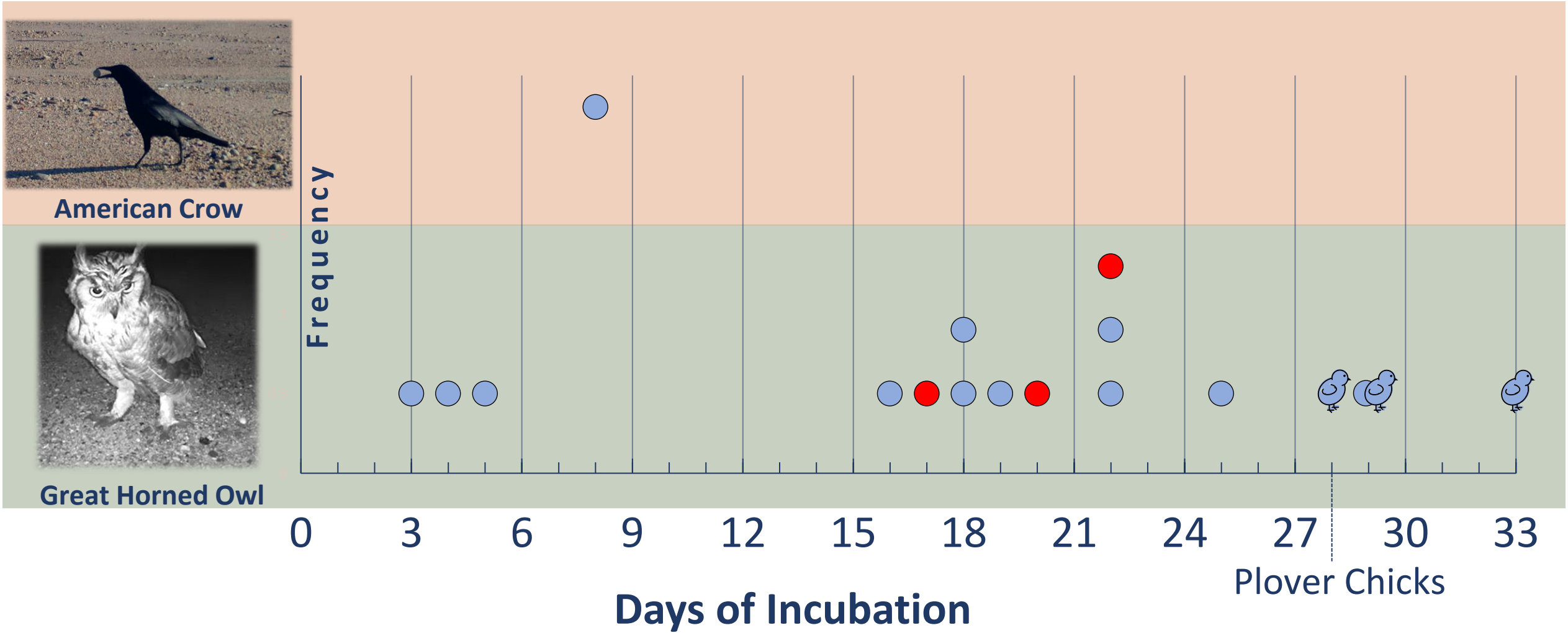


**6% Predation Events**

- 4 Plover Eggs



# Timing of Egg and Chick Predation



Tern Eggs



Plover Eggs



Plover Chicks





# Great Horned Owl Predatory Behavior

Yoke eggs



06-06-2021 22:26:39



# Great Horned Owl Predatory Behavior



Fully developed eggs and new chicks



# Questions?

